



MAY 2 2017

**TSB#C1705 REMOVAL OF THE GAS SENSOR
(ALL RT/RTC/UFT/EFTC/RGHW MODELS)**

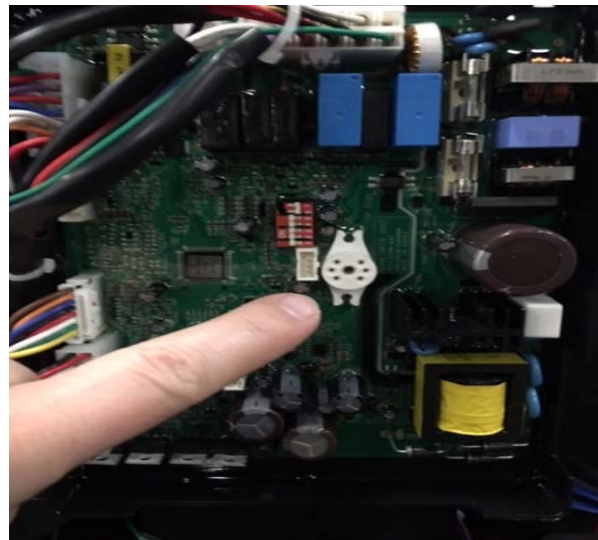
NOTICE: THE FOLLOWING EXPLAINS/CLARIFIES THE REMOVAL OF THE GAS SENSOR. EFFECTIVE 5/1/17 ALL GAS SENSORS WERE REMOVED FROM PRODUCTION OF THE ABOVE-MENTIONED MODELS TO INCREASE PRODUCT RELIABILITY

Follow these instructions to identify.

BEFORE



AFTER



THIS ELIMINATES THE ER40 CODE

IF YOU HAVE A MODEL ALREADY INSTALLED IN THE FIELD AND ARE EXPERIENCING RANDOM ER40 ISSUES, PLEASE CHECK WITH PROPER TOOLS FOR ANY GAS LEAKAGE AND IF NONE ARE PRESENT REMOVE THE SENSOR BY TURNING POWER OFF, PULL SENSOR OUT, AND THEN TURN POWER BACK ON

We apologize for any inconvenience.
For Further Assistance, Contact Technical Support at
1-800-323-9651 or techsupport@htproducts.com