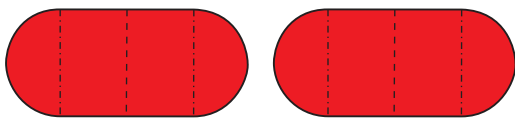
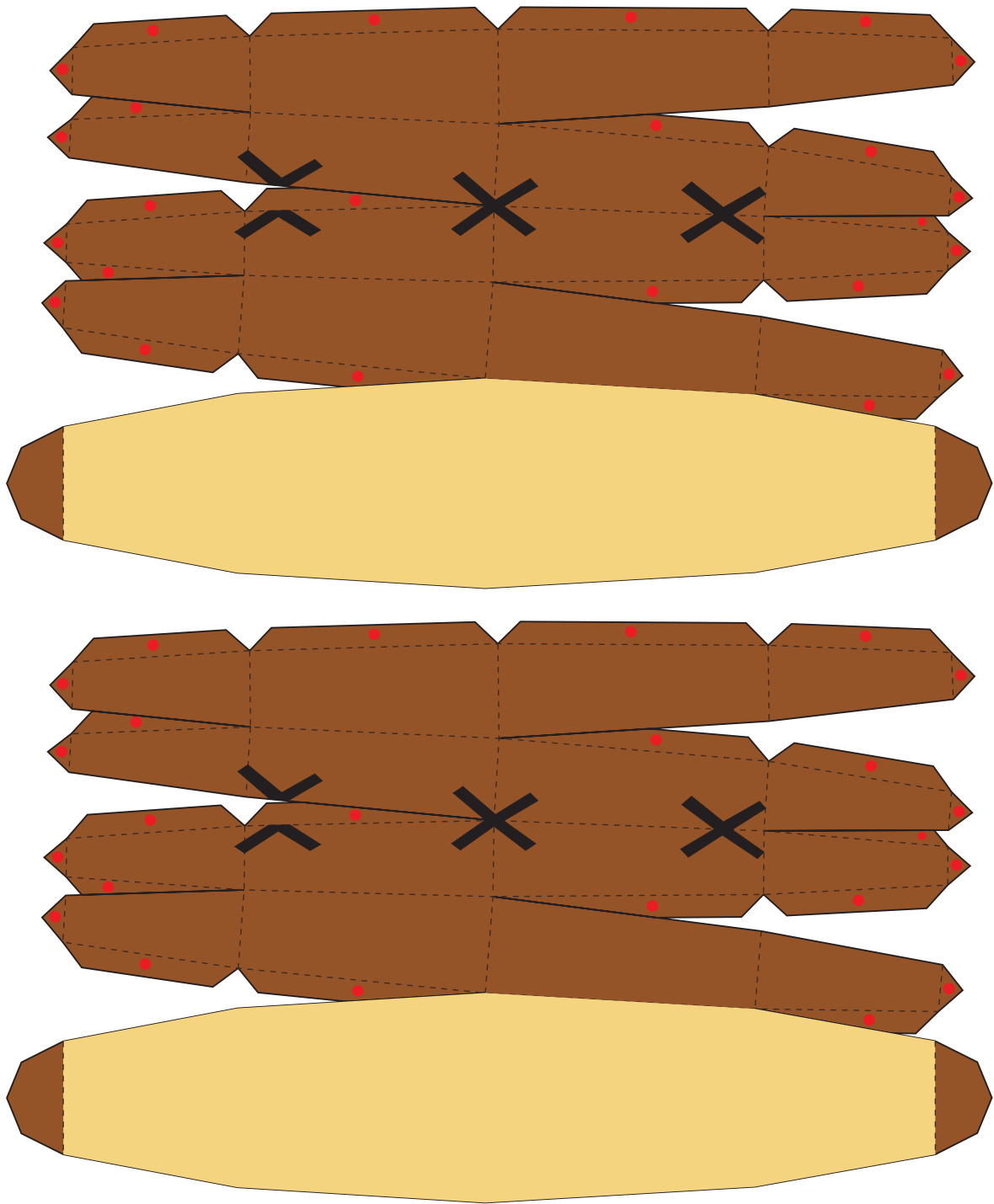
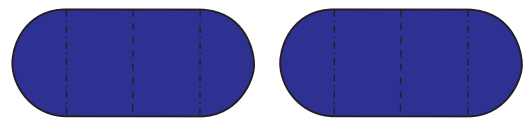




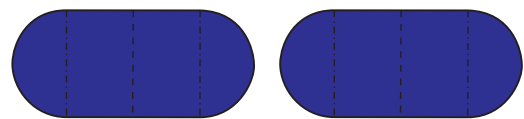
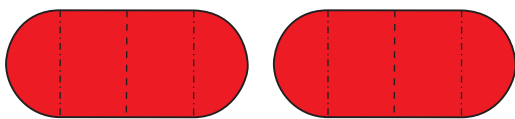
윷놀이 (Playing yut)

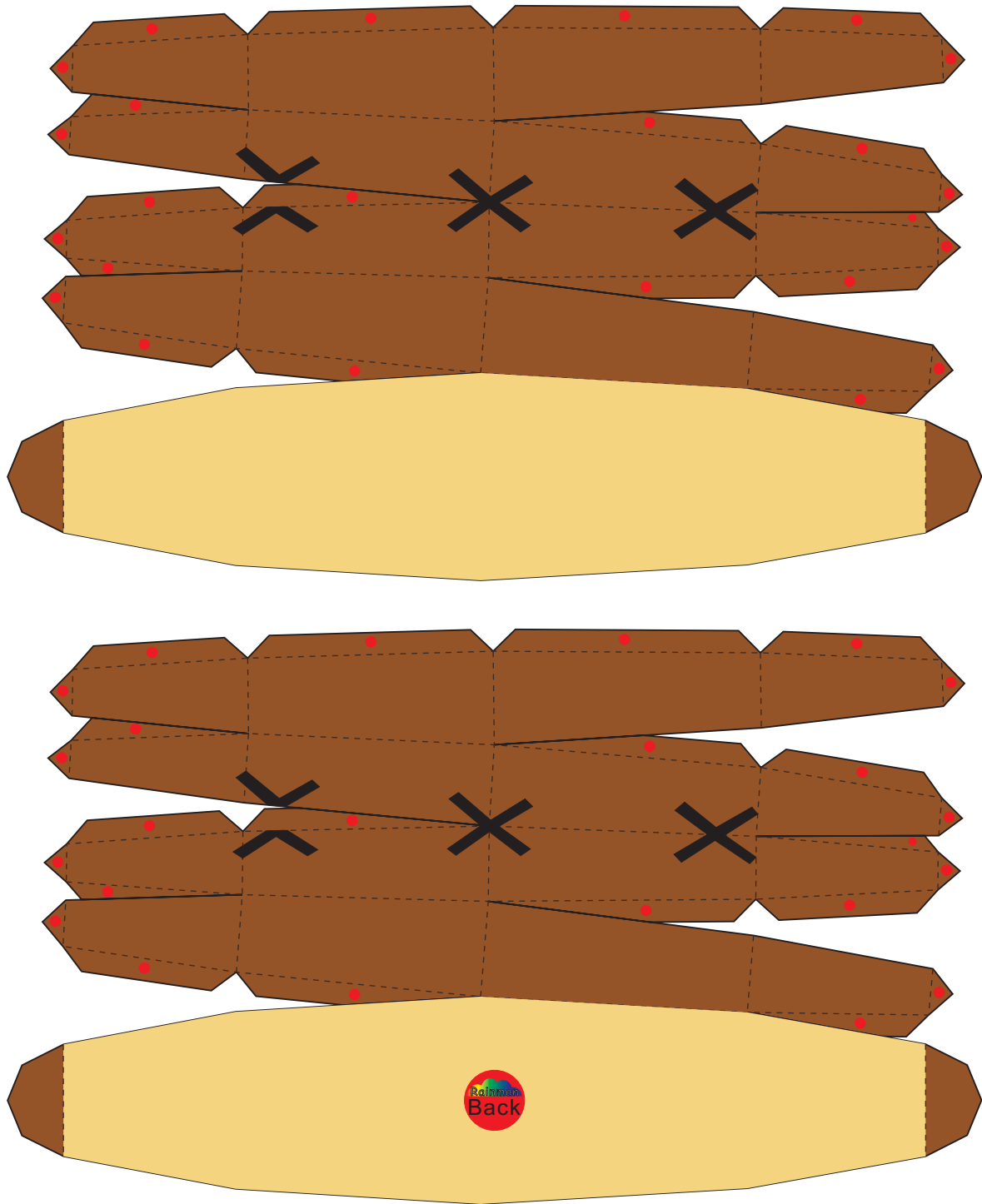


말 (Mal)

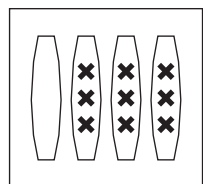
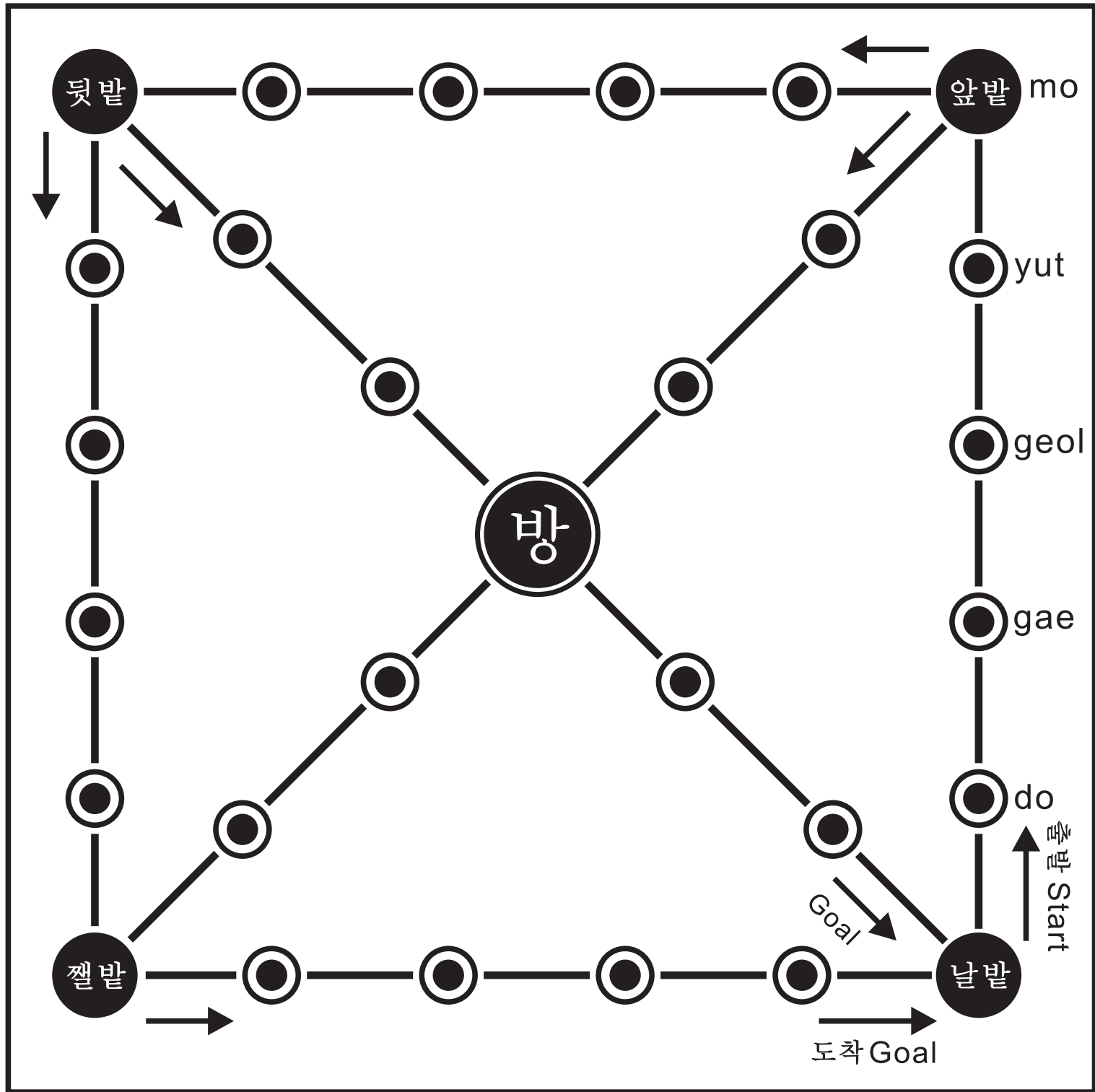


말 (Mal)

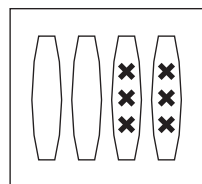




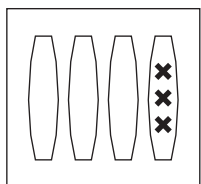
1. The game is played between two partners or two teams who play in turns.
2. A player achieving a Yut or Mo is allowed to cast again (No limit the number of times).
3. If a mal lands on a station occupied by the opponent's mal is removed from the course and returned to the starting position, and the current player is allowed to cast again.
4. If a mal lands on a station occupied own team, these mals can travel together from that point on (counting as one).
5. However, if an opponent lands their mal on a station occupied by several mals of the opponent, all these are removed from the course.



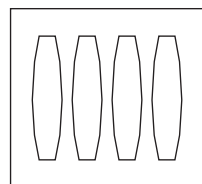
do:go 1block



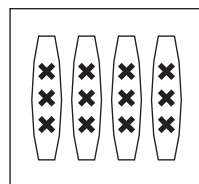
gae:go 2block



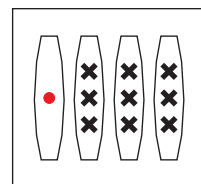
geol:go 3block



yut:go 4block



mo:go 5block



back do:back 1block

